



# Complete Linear Solutions

Full Coverage of Graze, Direct View and Cove Applications



2	Lumascape
4	PowerSync™
6	Vestalux LS9010
8	Vestalux LS9015
10	Vestalux LS9016
12	Linealux LS9030
14	Linealux LS9031
16	Linealux LS9032
18	Linealux LS9050
20	Terraluz LS3150
22	Faisca LS9260





# LUMASCAPE

Design. Create. Illuminate.

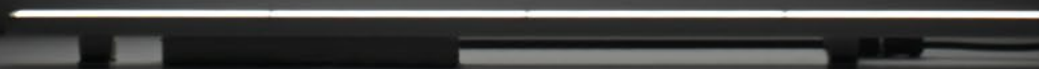
Transforming outdoor architectural spaces with precision engineered lighting solutions that are proven to perform.

Lumascape was founded in Australia in 1991 in response to a growing need for underwater and inground lighting products suitable for applications from coastal to desert environments.

Lumascape continues to develop innovative, high-tech, solid state lighting solutions used in multiple high profile projects throughout the world.

This means that customers can expect outcomes that are reliable, easy-to-install and contractor friendly with sophisticated controls.

Transforming spaces through applications of light and colour.



# powersync4™

## "Smart Power" for LED Luminaires

Powersync™ technology combines the convenience of standard wiring methods with the power of high-speed, digital-dimming. It translates control signal data into a digital format that can be transmitted over standard copper wire allowing highly granular addressing and control of every luminaire, using a single cable. Available in mains voltage and low voltage, the PowerSync™ Data Injector accepts a growing list of standard protocols (DMX/RDM, 0-10 V), for simple integration with new and existing control systems.

## Power & Data in One Cable

With PowerSync™, the deployment of complicated lighting control infrastructure becomes outdated. A single, three or four core cable attached to the luminaire is all that is needed – the PowerSync™ Data Injector on the circuit does the rest.

Luminaires run on a standard line voltage circuit (120-277 V) or low voltage (30-48 V DC) allowing maximum run lengths with minimal voltage drop. A single core in the luminaire cable carries the PowerSync™ signal.

Using Powersync™ technology, each luminaire can be accessed remotely, and addressed individually for DMX/RDM control. Group control using standard protocols like 0-10 V and phase dimming is also supported.

PowerSync™ provides a transparent link between an increasing number of standard protocols and the luminaire. Up to 45 PowerSync™ enabled units can be supported from a single Data Injector with a maximum branch circuit length of 492 ft (up to and beyond in some cases, 150m).

## Reduced Installation & Maintenance Costs

When it comes to installation and maintenance, Powersync™ offers significant cost savings over other technologies:

- » PowerSync™ was born from an industry need for simplified, contractor friendly installation without compromising dimming quality
- » PowerSync™ supports industry standard protocols: DMX/RDM, 0-10 V and ELV
- » High resolution dimming to 0.1%
- » Installation of PowerSync™ requires only standard wiring methods and materials
- » PowerSync™ uses a single extra conductor to carry data - less copper, fewer connectons vs. other manufacturers using standard protocols
- » Consistent dimming performance, wiring and installation across all PowerSync™ luminaires, regardless of the incoming signal

# Linealux **L1** LS9010

A linear graze luminaire for short throw applications



Control via 3-Wire Low Voltage

**powersync4**<sup>TM</sup>

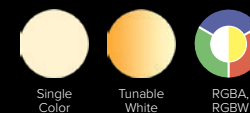




### Low Profile, High Output

286 lm / ft @ 4 W / ft (4,000 K)

Low Voltage (30-48 V DC)



Single  
Color

Tunable  
White

RGBA,  
RGBW

### Performance Graze Optics

Excellent uniformity and blending,  
for short throw applications

### High Frequency, Flicker-Free

2 kHz Flicker-Free Dimming to 0.1%

### Precision Control

Luminaire can be controlled in a range of  
increments down to 1 ft and up to the full length

### Built to Last

IP66/67 Rated

Extruded Marine Grade Aluminum

Superior 9-Step Powdercoating

Tempered Glass Lens

Connectorized Wiring

View Product Information  
[www.lumascape.com](http://www.lumascape.com) →



# Vestalux **V1** LS9015

A linear direct-view and wet location luminaire for architectural and infrastructure applications



Control via 3-Wire Low Voltage

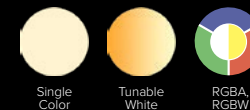
**powersync4**<sup>TM</sup>



### Low Profile, High Output

213 lm / ft @ 4 W / ft (4,000 K)

Low Voltage (30-48 V DC)



Single  
Color

Tunable  
White

RGBA,  
RGBW

### Performance Direct View Optic

Superior uniformity and  
high-quality color blending

### High Frequency, Flicker-Free

2 kHz Flicker-Free Dimming to 0.1%

### Precision Control

Luminaire can be controlled in a range of  
increments down to 1 ft and up to full length

### Built to Last

IP66/67 Rated

Extruded Marine Grade Aluminum

Superior 9-Step Powdercoating

Tempered Glass Lens

Connectorized Wiring

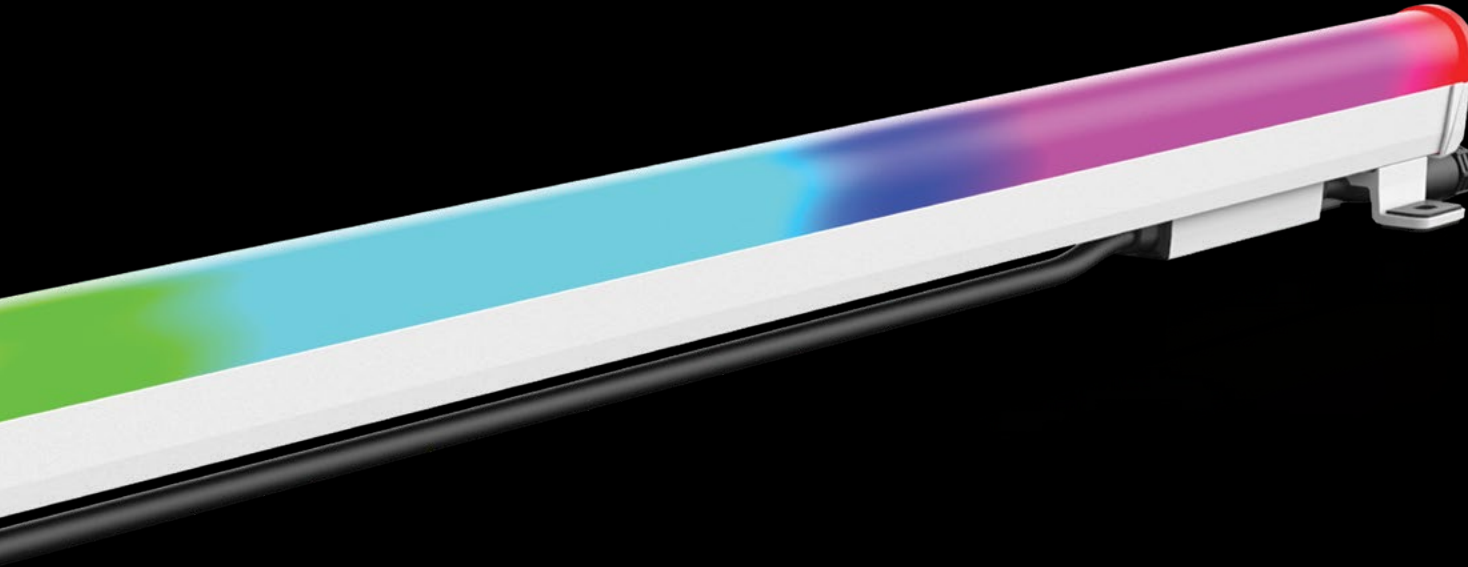


# Vestalux **V2** LS9016

A linear direct-view tube luminaire for architectural and infrastructure applications



Control via 3-Wire Low Voltage  
**powersync4**<sup>TM</sup>

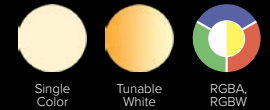


### Low Profile, High Output

350 lm / ft @ 4 W / ft (4,000 K)

513 lm / ft @ 6 W / ft (4,000 K)

Low Voltage (30-48 V DC)



Single  
Color

Tunable  
White

RGBA,  
RGBW

### Excellent Light Blending

Superior uniformity and  
high-quality color blending

### High Frequency, Flicker-Free

10 kHz Flicker-Free Dimming to 0.1%

### Precision Control

Luminaire can be controlled in a range of  
increments down to  $\frac{3}{4}$  in and up to full length

### Built to Last

IP66/67 Rated

Extruded Marine Grade Aluminum

Superior 9-Step Powder-Coating

UV Protected Polymer Tube

Connectorized Wiring

View Product Information  
[www.lumascape.com](http://www.lumascape.com) →

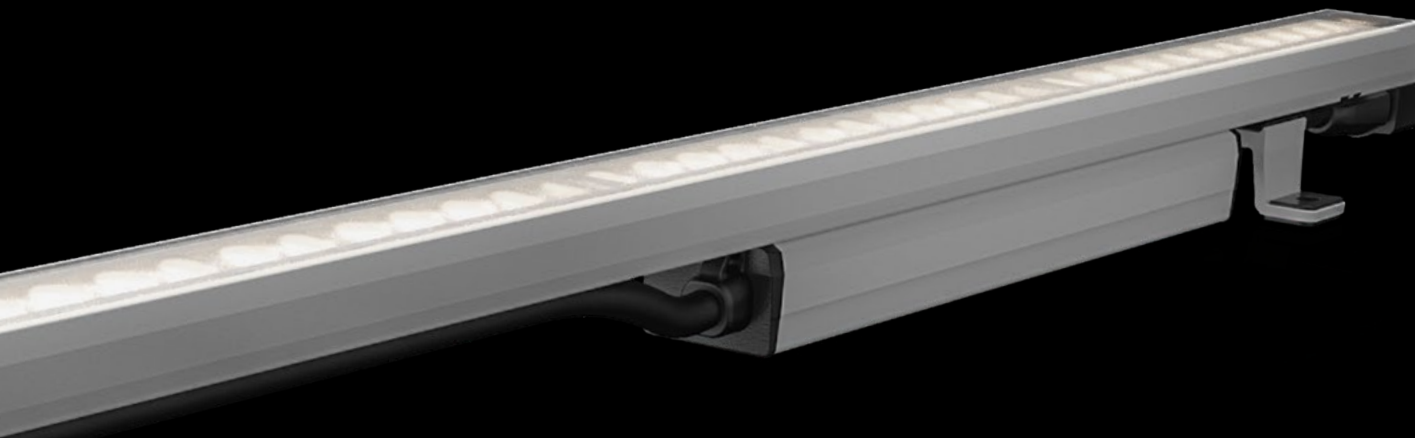


# Linealux **L3** LS9030

A medium-output linear graze luminaire for architectural and infrastructure applications

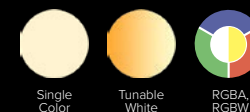


Control via 3-Wire Low Voltage  
**powersync4**<sup>TM</sup>



### Low Profile, High Output

332 lm / ft @ 5 W / ft (4,000 K)  
880 lm / ft @ 8 W / ft (4,000 K)  
1,271 lm / ft @ 12 W / ft (4,000 K)  
Line Voltage (120-277 V)



### Fully Customizable

Wide range of control options,  
resolutions and power levels available

### High Frequency, Flicker-Free

1.6 kHz Flicker-Free Dimming to 0.1%

### Resolution Control

Luminaire can be controlled in a range of  
increments down to 1 ft, and up to full length

### Built to Last

IP66/67 Rated  
Extruded Marine Grade Aluminum  
Superior 9-Step Powdercoating  
Tempered Glass Lens  
Connectorized Wiring



# Linealux **L3** LS9031 Lite

A linear graze luminaire for architectural and infrastructure applications



Control via 3-Wire Low Voltage

**powersync4**<sup>TM</sup>

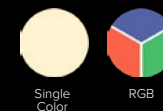




### Low Profile, High Output

953 lm / ft @ 9 W / ft (4,000 K)

Line Voltage (120-277 V)



### Lite & Easy

Built on the success of the L3, a single color and color-changing luminaire ideal for projects with less complex requirements

### High Frequency, Flicker-Free

2kHz Flicker-Free Dimming to 0.1%

### Resolution Control

Luminaire can be controlled by full length luminaire

### Built to Last

IP66/67 Rated

Extruded Marine Grade Aluminum

Superior 9-Step Powdercoating

Tempered Glass Lens

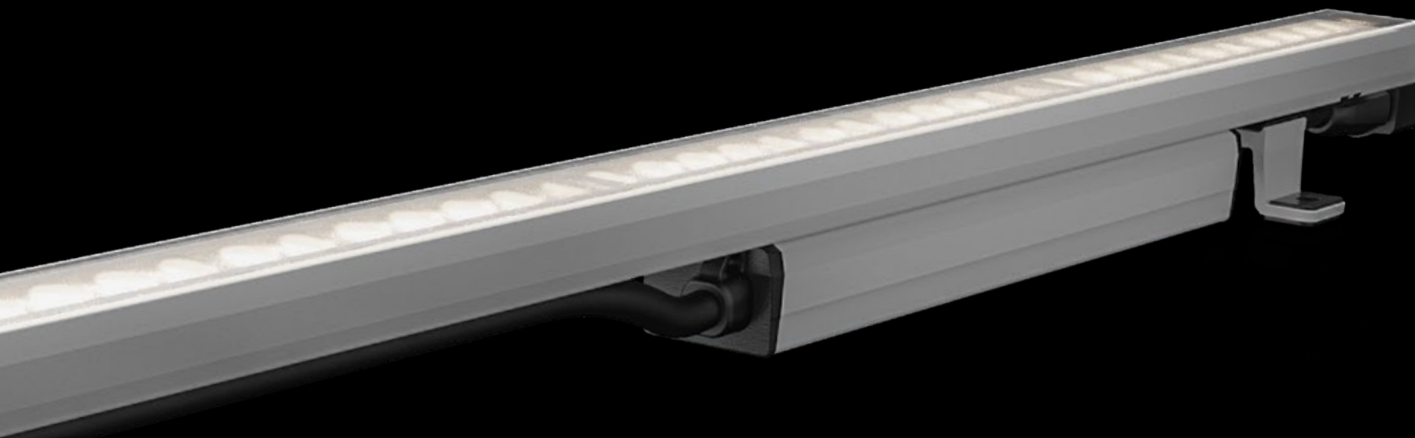
Connectorized Wiring



# Linealux **L3** LS9032 Foundation

A phase-dim linear graze luminaire for architectural and infrastructure applications

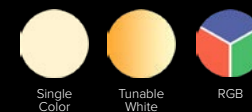




### Low Profile, High Output

1,225 lm / ft @ 10 W / ft (4,000 K)

Line Voltage (120-277 V)



Single  
Color

Tunable  
White

RGB

### High Frequency, Flicker-Free

0-10V, ELV

### Resolution Control

Luminaire is controlled as full luminaire

### Built to Last

IP66/67 Rated

Extruded Marine Grade Aluminum

Superior 9-Step Powdercoating

Tempered Glass Lens

Connectorized Wiring

View Product Information  
[www.lumascape.com](http://www.lumascape.com) →



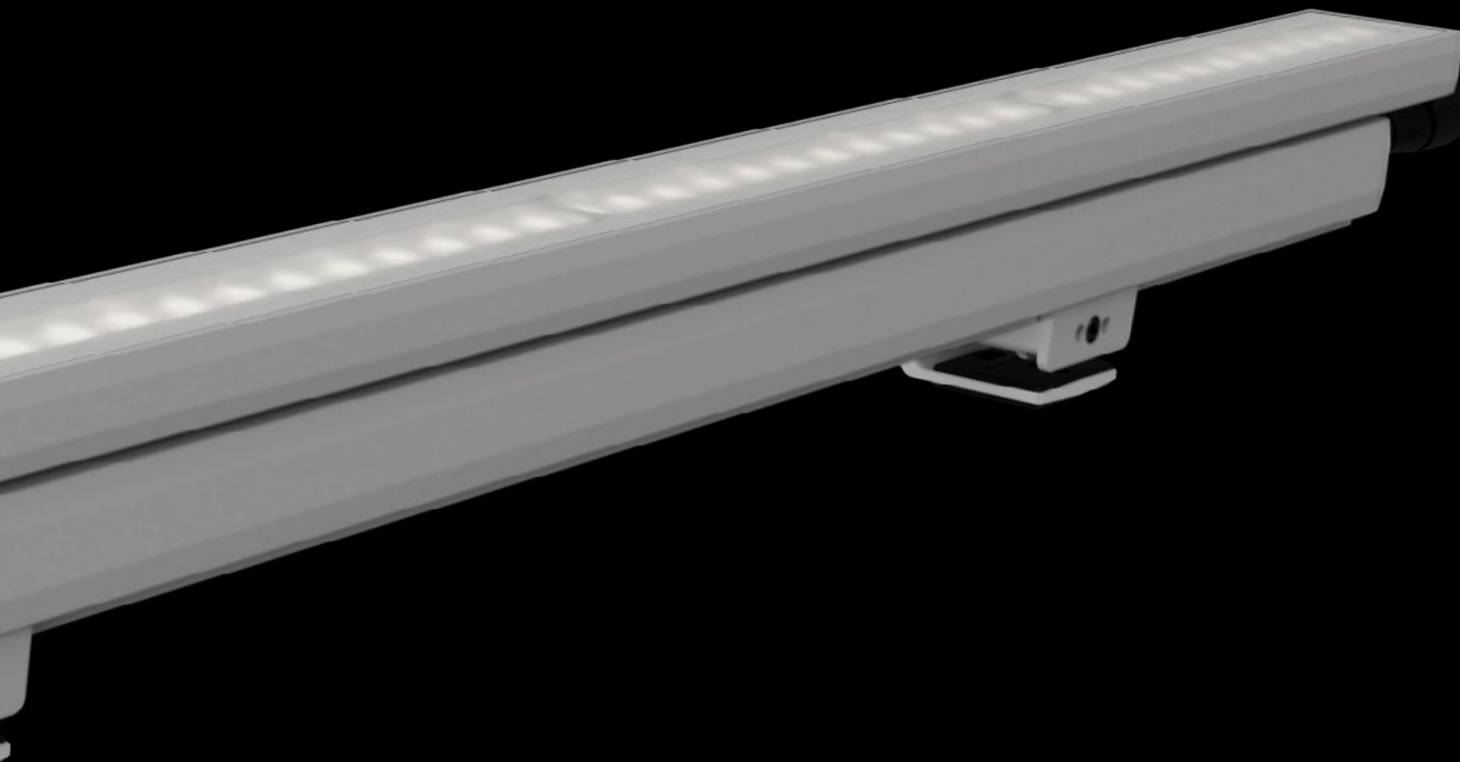
# Linealux **L5** LS9050

A high output linear graze luminaire for architectural and infrastructure applications



Control via 4-Wire Line Voltage

**powersync4**<sup>TM</sup>

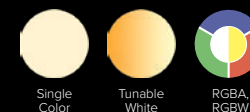


### Low Profile, High Output

1,595 lm / ft @ 15 W / ft (4,000 K)

2,224 lm / ft @ 22 W / ft (4,000 K)

Line Voltage (120-277 V)



Single  
Color

Tunable  
White

RGBA,  
RGBW

### Highly Flexible

Wide range of control options,  
resolutions and power levels available

### High Frequency, Flicker-Free

2 kHz Flicker-Free Dimming to 0.1%

### Resolution Control

Luminaire can be controlled in a range  
of increments down to 1 ft, and up to full length

### Built to Last

IP66/67-Rated

Extruded Marine Grade Aluminum

Superior 9-Step Powdercoating

Tempered Glass Lens

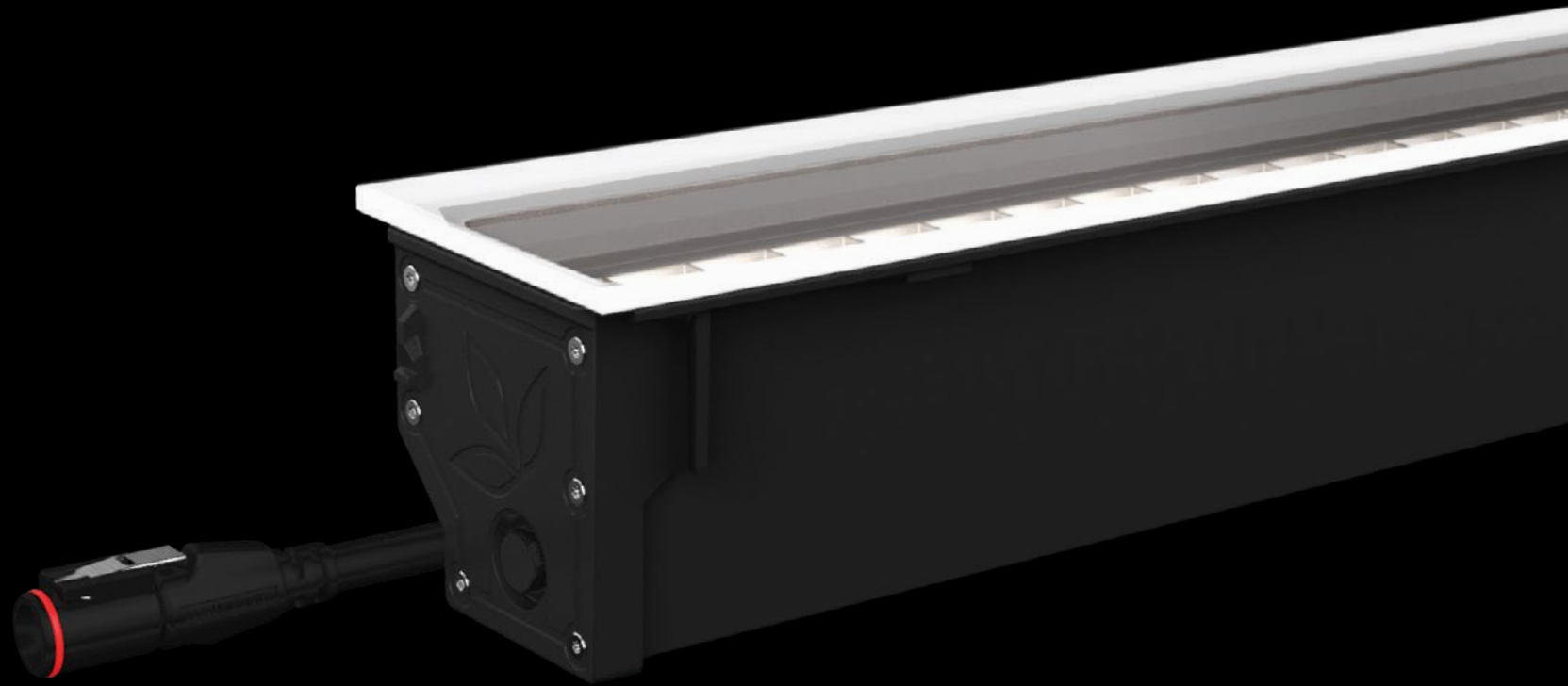
Connectorized Wiring

View Product Information  
[www.lumascape.com](http://www.lumascape.com) →



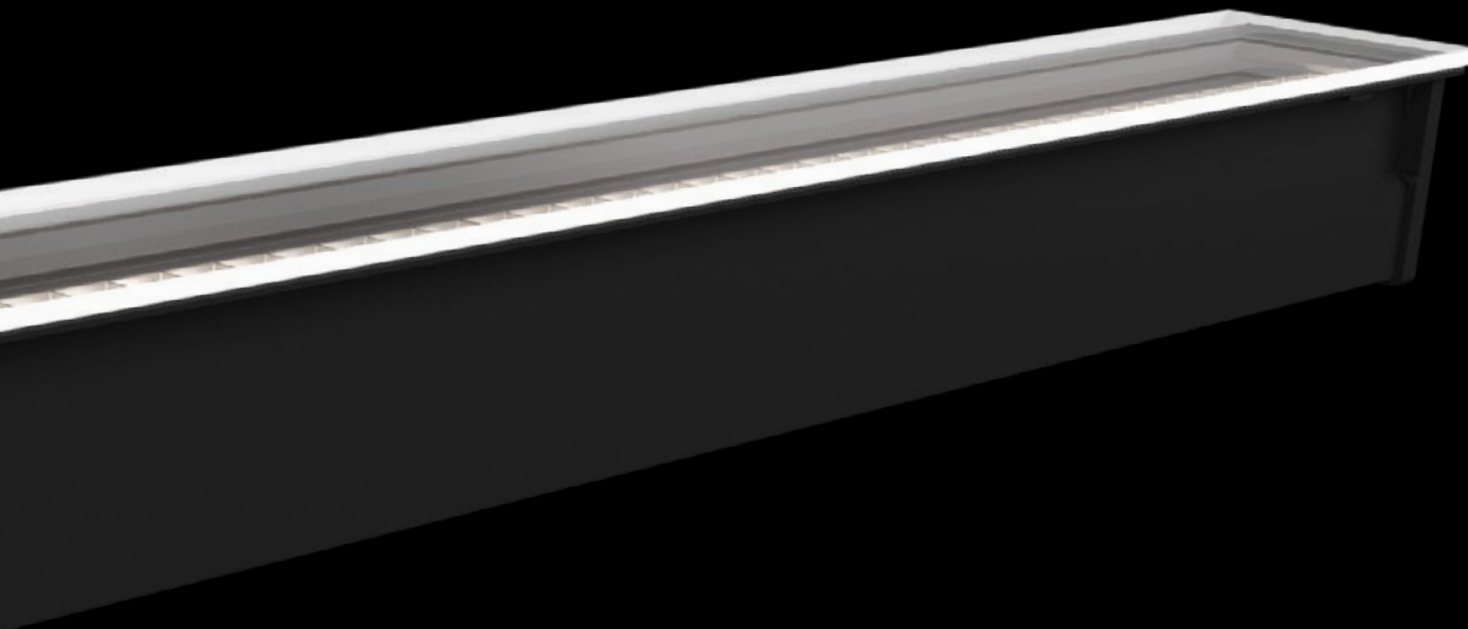
# Terraluz **TE5** LS3150

A high-output linear ingrade luminaire for architectural and infrastructure applications



Control via 4-Wire Line Voltage

**powersync4**<sup>TM</sup>



### High Performance, High Output

1,360 lm / ft @ 12 W / ft (4,000 K)

1,873 lm / ft @ 16 W / ft (4,000 K)

Line Voltage (120-277 V)



Single  
Color

Tunable  
White

RGBA,  
RGBW

### High Frequency, Flicker-Free

2 kHz Flicker-Free Dimming to 0.1%

### Multiple Orientations

Unique "T" and "L" junctions – allows installation in multiple orientations

### Tilt Adjustment

±15° tilt mechanism allows for application versatility

### Resolution Control

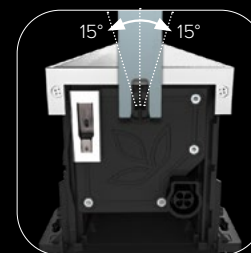
Luminaire can be controlled down to 1 ft, and up to full length

### Built to Last

IP66/67-Rated (IP68 Tested)  
Extruded Marine Grade Aluminum  
Superior 9-Step Powdercoating  
Tempered Glass Lens  
Connectorized Wiring



Unique "T" and "L" junctions



Tilt Adjustment

View Product Information  
[www.lumascap.com](http://www.lumascap.com) →



# Faisca **F6** LS9260

A high output surface mount pixel for architectural and infrastructure applications



Control via 4-Wire Line Voltage

**powersync4**<sup>TM</sup>

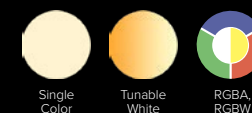




### High Intensity, Beautiful Colour

1,200 lm @ 18 W (4,000 K)

Low Voltage (30-48 V DC)



Single  
Color

Tunable  
White

RGBA,  
RGBW

### Excellent Light Blending

From highlighting architectural elements  
to super smooth crossfades and color flows

### Plug and Play

Auto-addressing function, and  
connectorized wiring

(Connectorized version not available in North America)

### High Frequency, Flicker-Free

2 kHz Flicker-Free Dimming to 0.1%

### Built to Last

IP66 Rated

Extruded Marine Grade Aluminum

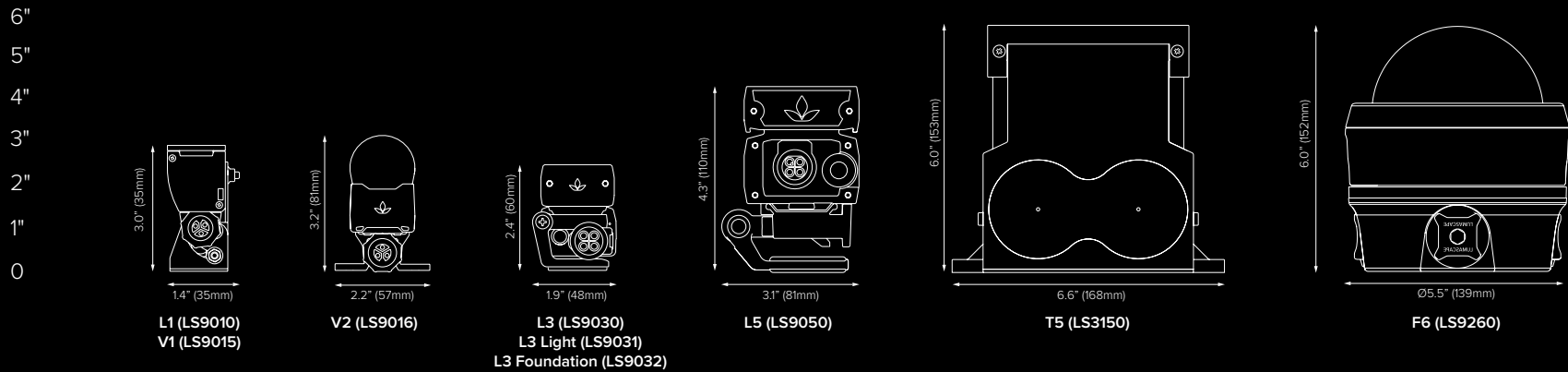
Superior 9-Step Powdercoating

UV Stabilized Polymer Diffuser

Connectorized Wiring

View Product Information  
[www.lumascape.com](http://www.lumascape.com) →





## Complete Linear Solution Comparison Matrix

	<b>L1</b>	<b>V1</b>	<b>V2</b>		<b>L3</b>		<b>L3 Lite</b>	<b>L3 Foundation</b>	<b>L5</b>		<b>TE5</b>	
Part No.	LS9010	LS9015	LS9016		LS9030		LS9031	LS9032	LS9050		LS3150	
Supply Voltage	30-48 V DC	30-48 V DC	30-48 V DC		120-277 V AC		120-277 V AC	120-277 V AC	120-277 V AC		120-277 V AC	
W / ft	4 W / ft	4 W / ft	4 W / ft	6 W / ft	5 W / ft	12 W / ft	9 W / ft	10 W / ft	15 W / ft	22 W / ft	12 W / ft	16 W / ft
Lumens / ft RGB	—	—	—	—	—	—	440 lm / ft	—	—	—	—	—
Lumens / ft RGBW	161 lm/ft	97 lm/ft	200 lm/ft	279 lm/ft	195 lm/ft	759 lm/ft	—	—	810 lm/ft	1117 lm/ft	750 lm/ft	1048 lm/ft
Lumens / ft White (4000 K)	286 lm/ft	213 lm/ft	350 lm/ft	513 lm/ft	332 lm/ft	1,271 lm/ft	953 lm/ft	1,225 lm/ft	1,595 lm/ft	2,224 lm/ft	1,360 lm/ft	1,873 lm/ft
System Protocol	PowerSync4™	PowerSync4™	PowerSync4™		PowerSync4™		PowerSync4™	0-10 V, ELV	PowerSync4™		PowerSync4™	
Input Dimming Signal	0-10 V, DMX/RDM	0-10 V, DMX/RDM	0-10 V, DMX/RDM		0-10 V, DMX/RDM		0-10 V, DMX/RDM		0-10 V, DMX/RDM, ELV		0-10 V, DMX/RDM, ELV	
Resolution	1 in to Full Fixture***	1 in to Full Fixture***	3/4 in to Full Fixture***		1 in to Full Fixture***		Full Fixture	Full Fixture	1 ft to Full Fixture***		1 ft to Full Fixture***	
Installation	Surface Mount	Surface Mount	Surface Mount		Surface Mount		Surface Mount	Surface Mount	Surface Mount		In Grade	
Application	Direct View	Grazer	Direct View		Grazer		Grazer	Grazer	Grazer		Grazer	
Available Lengths (ft)	1, 2, 3, 4, 5 ft	1, 2, 3, 4, 5 ft	1, 2, 3, 4, 5 ft		1, 2, 3, 4, ft		2, 4 ft	2, 3, 4, ft	1, 2, 3, 4 ft		1, 2, 3, 4 ft	
Supported PowerSync™ Data Injectors	LS6550 LS6520	LS6550 LS6520	LS6550 LS6520		LS6540		LS6540	Direct 0-10 V Direct ELV	LS6540		LS6540	

\*\*\* Pixel size / resolution can be pre-set in factory or in field using RDM commands



#### ASIA PACIFIC

Brisbane Technology Park  
18 Brandl Street  
Eight Mile Plains, QLD 4113  
Australia  
Phone: +61 7 3854 5000  
Fax: +61 7 3854 5001  
Email: sales@lumascape.com

#### NORTH AMERICA

1300 Industrial Road, Unit #19  
San Carlos, CA 94070  
United States of America  
Phone: +1 650 595 5862  
Email: info@lumascape.com

#### CHINA

20 West Building, No 377 Wuyi Road  
Wujin Hi-Tech Zone  
Changzhou, Jiangsu, China  
Phone: +86 519 8919 2555  
Fax: +86 519 8919 1053  
Email: chinasales@lumascape.com

#### MIDDLE EAST

Dubai World Centre  
Building Block C, Office #432  
Dubai  
United Arab Emirates  
Phone: +971 4 887 9951  
Fax: +971 4 887 9601  
Email: sales@lumascapeme.ae

FOLLOW US



[WWW.LUMASCAPE.COM](http://WWW.LUMASCAPE.COM)