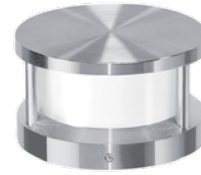




The LS592 is the smallest version of the Balitza series. It is constructed from 316 marine grade stainless steel with Lumascope's proprietary **ElectroPolishPlus™** process to give a long life to the surface finish providing excellent corrosion resistance in harsh environments such as coastal locations. It is a compact accent luminaire, utilizing a low voltage halogen lamp to create low level lighting effects.



LS592 Balitza Micro

Specifications

Lamp	20 W max	Halogen Bi-pin / QT12 (G6.35)
IP Rating	IP65	
Construction	316 marine grade stainless steel	
Installation Type	Surface mount	
Ambient Operating Temperature	32 °F to 122 °F (0 °C to +50 °C)	

Any luminaire can become hot - take care with appropriate use and placement

