

MODEL LS363LED
INSTALLATION TYPE LS644-K Pre-Install Kit
 LS644-2 Mounting Collar

IP RATING IP68
SUPPLY VOLTAGE 110-240 V AC 50/60 Hz
 Low Voltage RGB

INSTRUCTIONS COVER Single Colour
 RGB (Integral & Remote Driver)



LS363LED Pre-Install

Warranty void if not installed as per installation instructions

N653

DANGER

ISOLATE LUMINAIRE FROM POWER

Failure to isolate power supply before installation or maintenance may result in fire, serious injury, electric shock, death and may damage the luminaire.



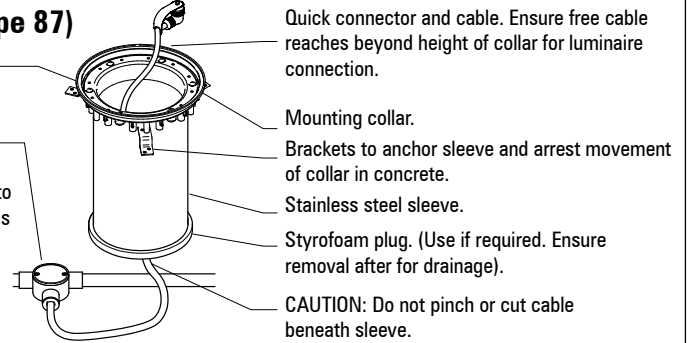
GENERAL ASSEMBLY (Type 87)

Finished surface level to be flush with top surface of collar.

Factory supplied J-Box with 25 mm conduit entries.

Use electrical grade resin (not supplied) to fill and seal junction box after connections have been made and tested to ensure water-proofing.

Suitable for LS644-K



Before you begin always check luminaire label for correct supply details and lamp type if applicable.

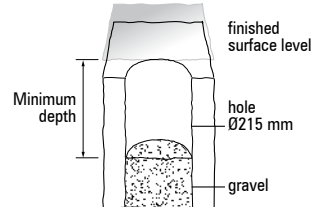


Power supply must be isolated prior to connection or disconnection of cables. Failure to do so will result in damage to the luminaire components.



When installing a luminaire with quick connector and junction box assembly use electrical grade resin (contractor to provide) to water proof electrical connection in junction box after connection has been made and tested.

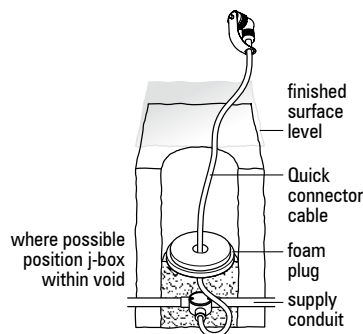
- Hole detail - section view**
 Layout luminaire locations as required. Use discretion in placement, luminaire may become hot and could burn. Luminaire cavity should be as shown. Ensure gravel or similar medium forms the bottom of cavity to allow drainage.



Minimum depth for LS363LED 330 mm

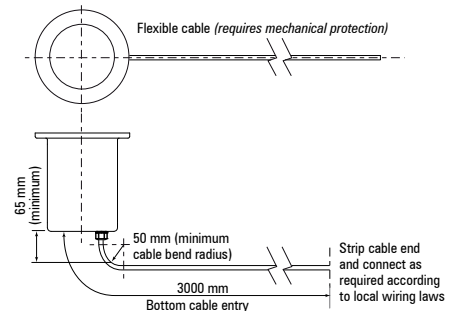
- Supply connection**
 - Connect junction box supplied and punch a hole in foam plug to pass through connector.
 - Pack hole in plug around the cable to ensure concrete doesn't enter the luminaire cavity. (Ensure the cap on the connector is secure)

Type 87 cable entry: QUICK CONNECTOR & JUNCTION BOX

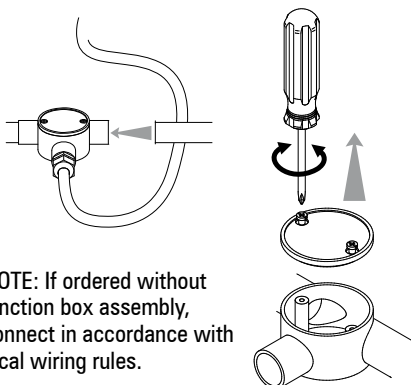


Type 84 cable entry: MICRO ANTILEACH 3M CABLE ENTRY

Connect in accordance with local wiring rules.

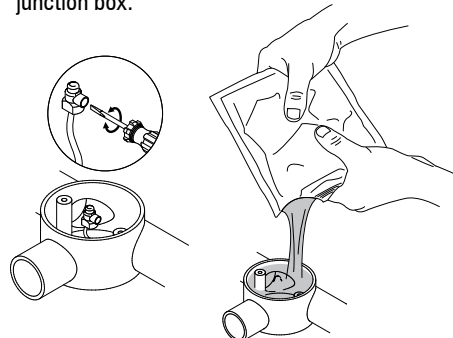


- Supply connection - Type 87 connection only**
 Connect according to junction box installation instructions and local wiring rules.

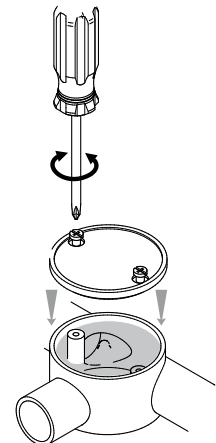


NOTE: If ordered without junction box assembly, connect in accordance with local wiring rules.

- Terminate and waterproof the connections**
 Connect wiring and test prior to potting. Add electrical grade epoxy resin to water proof junction box.



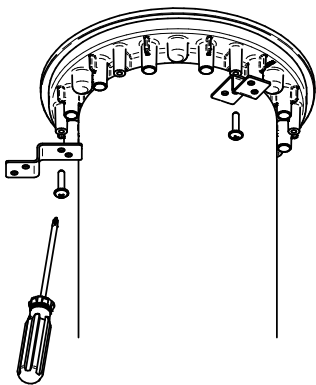
- Seal**
 Using a screwdriver seal junction box. Ensure not to over tighten.



Power supply must be isolated prior to connection or disconnection of cables. Failure to do so will result in damage to the luminaire components.

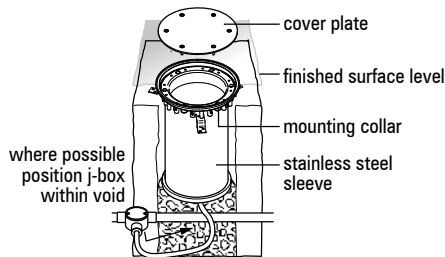
6. Attach brackets

Position and use screws to attach brackets at the bottom of the lid before concrete is poured.



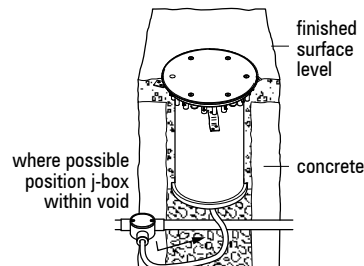
7. Fit sleeve, collar and cover plate

- Fit sleeve over foam plug.
- Ensure enough cable is in the cavity to connect to luminaire.
- Position top lip of mounting collar to be flush with finished surface level.
- Screw cover plate to mounting collar if required.



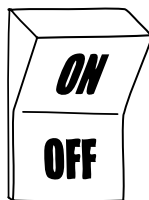
8. Pour concrete

Pour concrete. Check that the top surface of mounting collar is flush with the finished surface level.



9. Isolate luminaire

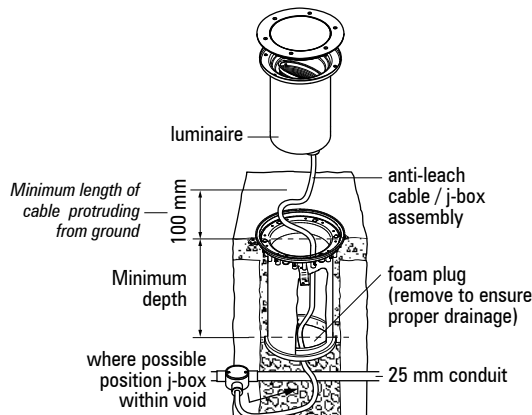
Make sure the fixture is electrically isolated before connecting the luminaire cable to the power supply.



10. Fit luminaire

When ready to install luminaire;

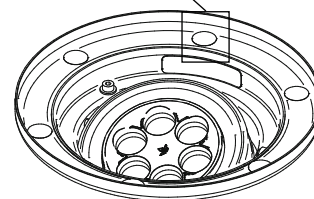
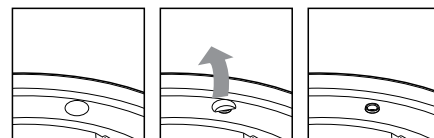
- Destroy foam plug and assemble luminaire.
- Remove cover plate (if located).
- For Type 87 cable, connect IP67 plug (do not dispose of cap). For Type 84 connect cable as required by local wiring rules.



Minimum depth for LS363LED 330 mm

11. Remove protective stickers

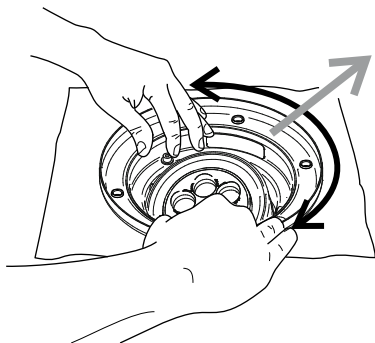
Remove any protective stickers that may be there covering screw holes for the lid on the luminaire body.



Power supply must be isolated prior to connection or disconnection of cables. Failure to do so will result in damage to the luminaire components.

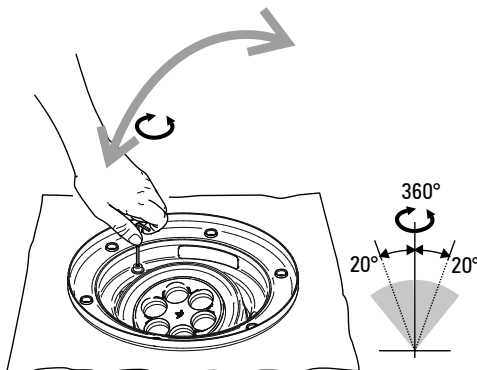
12. Target gimbal

Rotate gimbal until **Aiming Mark** is targeted as desired.



13. Lock gimbal

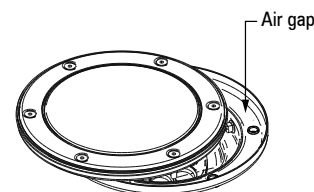
Lock Gimbal. Whilst exerting downward pressure on gimbal, tighten rotational lock grub screw.



14. Run luminaire

Lay lid partially over luminaire to allow a gap for any moisture present to evaporate prior to sealing. Connect to supply and allow to burn for 10-15 minutes. Seal luminaire.

IMPORTANT - DO NOT ENERGISE WITHOUT PARTIALLY COVERING LAMP



15.

Seal luminaire.

Seal immediately after de-energising.

Ensure seal and sealing surface is clean.

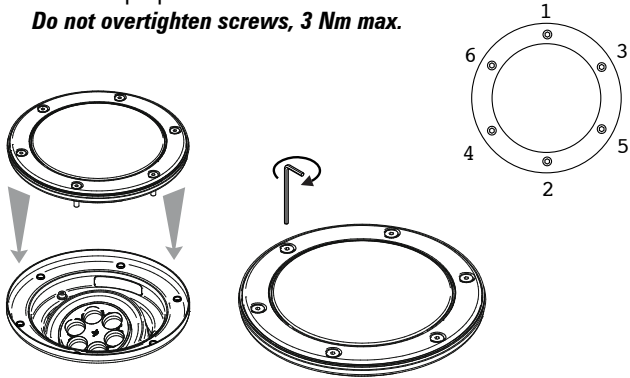
Clean glass if necessary. Tighten lid screws

Using the 3 mm allen key supplied.

Ensure seal/sealing surface is free from debris.

Lumascope recommends tightening in the below torque pattern

Do not overtighten screws, 3 Nm max.



Wiring Diagrams

Mains Voltage

Wire Colour	Designation
Brown	Active
Green	Earth
Blue	Neutral

Wire Colour	Designation
Black	Active
Green	Earth
White	Neutral

Low Voltage

Wire Colour	Designation
Red	Red +
Orange	Red -
Green	Green +
White	Green -
Blue	Blue +
Black	Blue -

Wire Colour	Designation	
	AC	DC
White	AC1	+
Black	AC2	-
Orange	PWM Common	
Red	PWM Red	
Green	PWM Green	
Blue	PWM Blue	

Wire Colour	Designation	
	AC	DC
Red	AC1	+
Black	AC2	-
Orange ⁽¹⁾	PWM + (Optional)	
Grey ⁽¹⁾	PWM - (Optional)	

⁽¹⁾ Do not connect if dimming is not required

Questions?
Call +61 7 3286 2299
Email sales@lumascope.com.au
www.lumascope.com.au

SAFETY INSTRUCTIONS

WARNING - To reduce the risk of FIRE or INJURY:

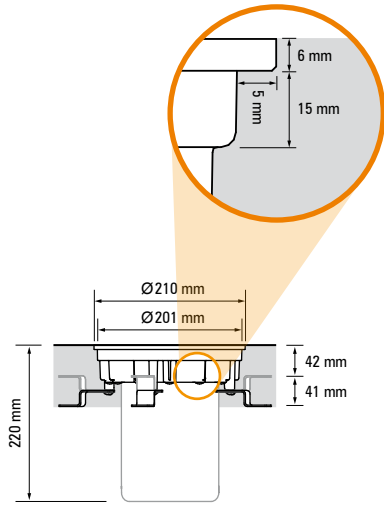
1. Luminaires and transformers to be installed by licensed electrical contractors.
2. Luminaires to be used for intended purpose only.
3. Do not operate the luminaires with a missing or damaged parts.
4. Use only genuine Lumascope parts to replace damaged or missing components.
5. Refer to instructions for installation and operating requirements.
6. Ensure installation complies with local regulations

Voltage insulation test (megger) will permanently damage product and will void warranty.

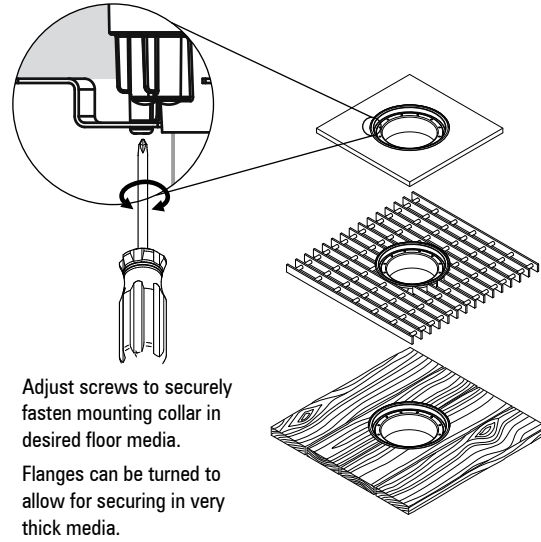
SAVE THESE INSTRUCTIONS.

LS644-2 Mounting Collar Installation

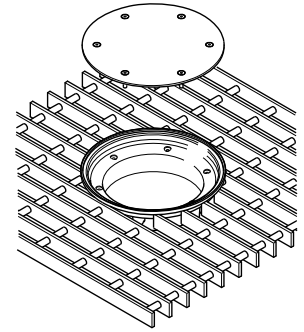
1. Mount collar
Installation details.



2. Mount collar
Mount collar securely in floor media.



3. Temporary cover plate
If installation of luminaire into mounting collar is to be delayed we recommend the installation of the cover plate.



4. Isolate luminaire
Make sure the fixture is electrically isolated before connecting the luminaire cable to the power supply.

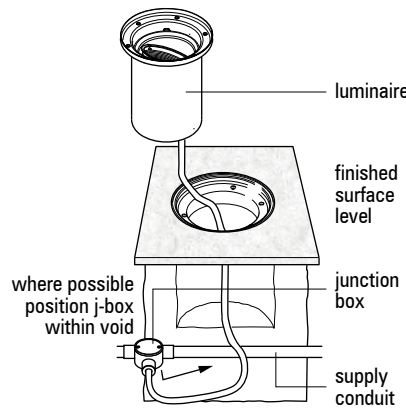


Power supply must be isolated prior to connection or disconnection of cables. Failure to do so will result in damage to the luminaire components.

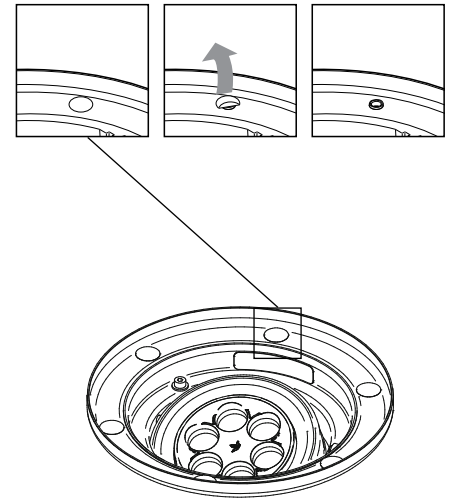


When installing a luminaire with quick connector and junction box assembly use electrical grade resin (contractor to provide) to water proof electrical connection in junction box after connection has been made and tested. See pg 1 steps 3-5 for details.

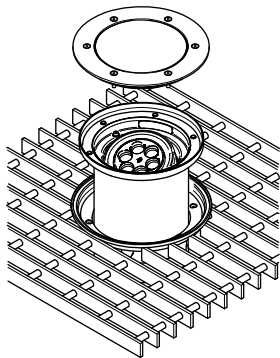
5. Supply connection
If luminaire is ordered with junction box cable entry, connect according to junction box installation instructions and local wiring rules. If ordered without junction box assembly, connect in accordance with local wiring rules.



6. Remove protective stickers
Remove any protective stickers that may be there covering screw holes for the lid on the luminaire body.



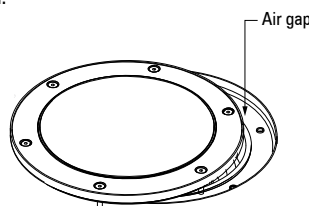
7. Mount luminaire
Insert luminaire into mounting collar aligning holes in the flange with tapped holes in the collar. Insert lamp, test and seal luminaire.



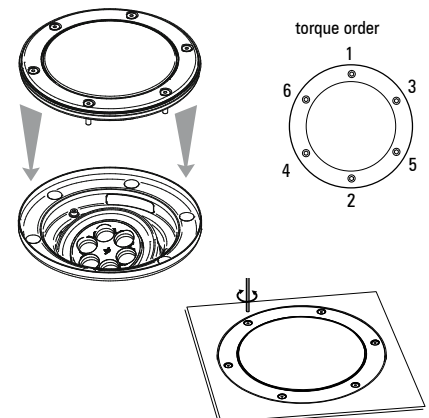
9. Run luminaire
Lay lid partially over luminaire to allow a gap for any moisture present to evaporate prior to sealing. Connect to supply and allow to burn for 10-15 minutes. Seal luminaire.
IMPORTANT - DO NOT ENERGISE WITHOUT PARTIALLY COVERING LAMP



15 min.



10. Seal luminaire.
Seal immediately after de-energising. Ensure seal and sealing surface is clean. Clean glass if necessary. Tighten lid screws Using the 3 mm allen key supplied. Lumascope recommends tightening in the below torque pattern
Do not overtighten screws, 4 Nm max.



8. Accessories
Add accessories (Note refer to accessory stacking sheet above). Further gimbal adjustments may be required with accessories in place.