

LS431LED: Surface Mount Remote Gear

Warranty void if not installed as per installation instructions

DANGER

ISOLATE LUMINAIRE FROM POWER

Failure to isolate power supply before installation or maintenance may result in fire, serious injury, electric shock, death and may damage the luminaire.



WARNINGS

All connections must be kept dry; failure to do so may result in product reliability issues

This is an above ground luminaire and no part of it should be below ground level or covered in soil or mulch

CAUTION: luminaires can become very hot. Use discretion in placement

COMPONENTS

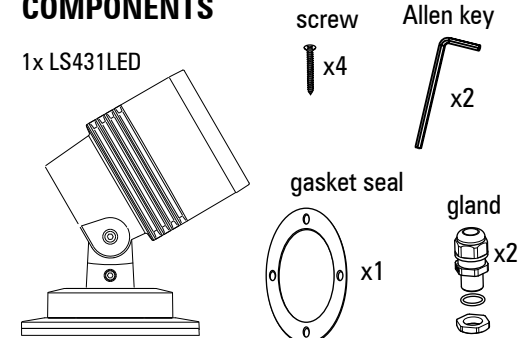
1x LS431LED

screw x4

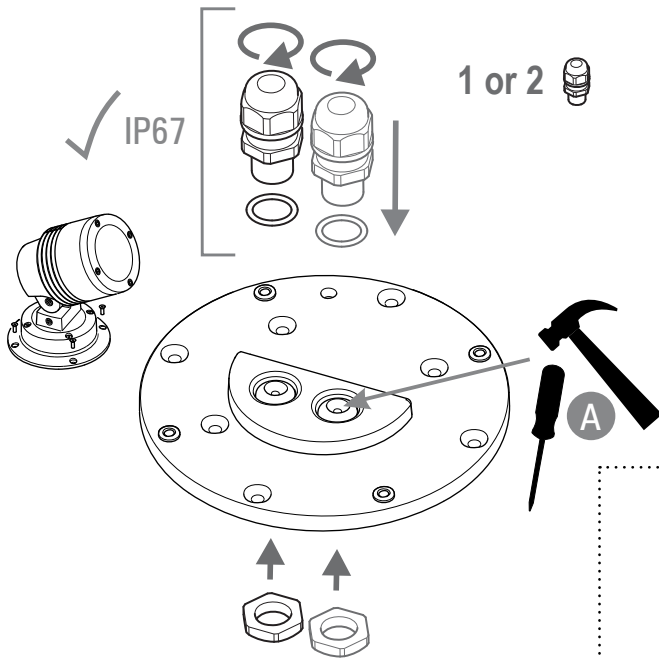
Allen key x2

gasket seal x1

gland x2



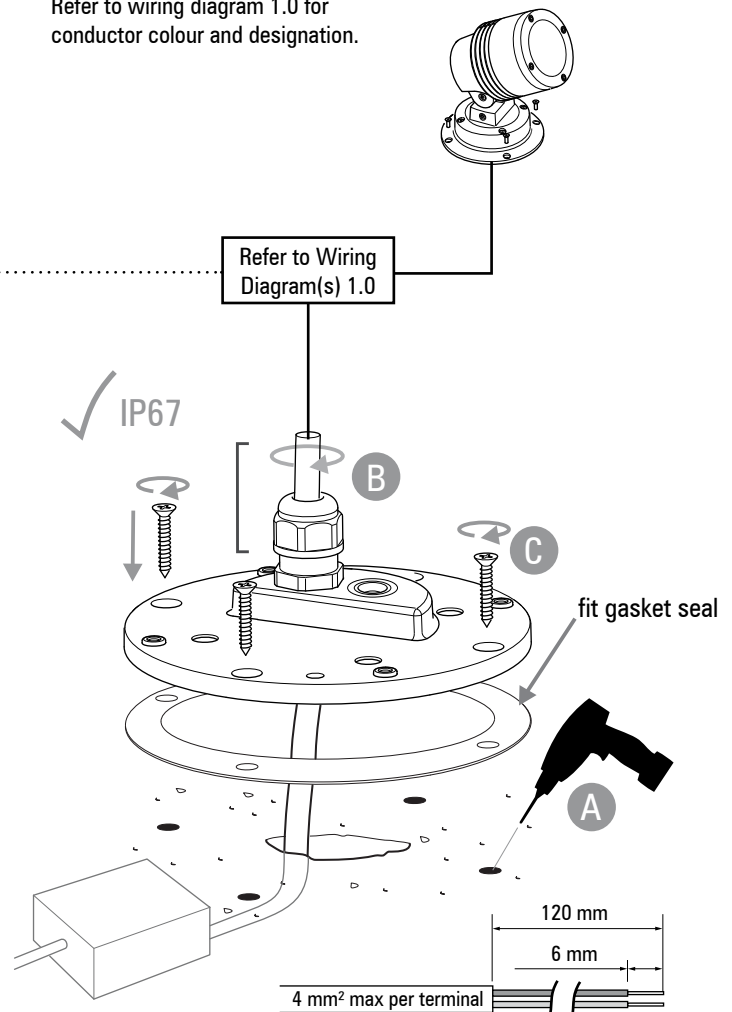
1. Punch gland holes:
 Depending on your requirements punch out one or two holes and install gland(s) as shown in illustration below.



2. Secure base and tighten entry gland:
 Drill mounting holes for luminaire. Feed the cable through the gland and tighten as shown in illustration. Repeat this process if a second gland is installed. Ensure a correct sized, round cable (Ø5-10 mm) is used or seal will not be IP67. Screw down luminaire base. Ensure gasket seal is inserted between surface and luminaire base.

Wire up luminaire to supply cable. Please note that the single colour LED luminaire will be supplied with a terminal block. For the RGB versions wire nuts (not supplied) must be used to make the connection between the luminaire to the supply cable.

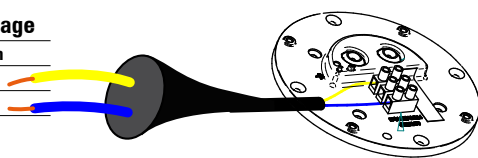
Refer to wiring diagram 1.0 for conductor colour and designation.



Wiring Diagram 1.0

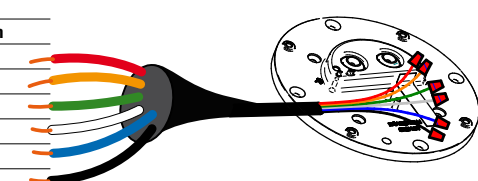
Single Colour Low Voltage

Wire Colour	Designation
Yellow	+
Blue	-



RGB Remote Driver

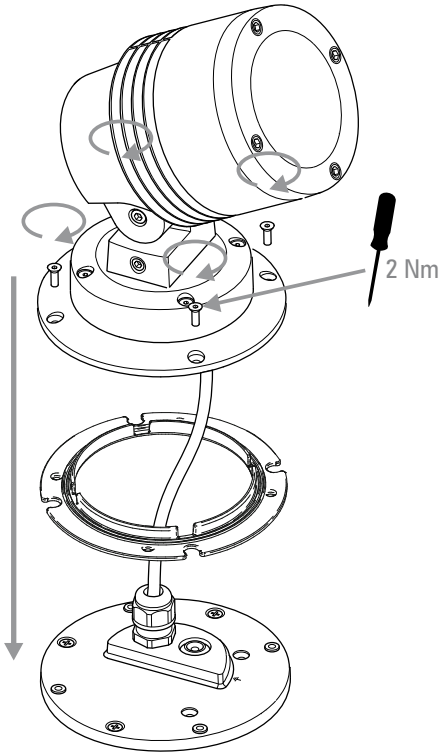
Wire Colour	Designation
Red	Red +
Orange	Red -
Green	Green +
White	Green -
Blue	Blue +
Black	Blue -



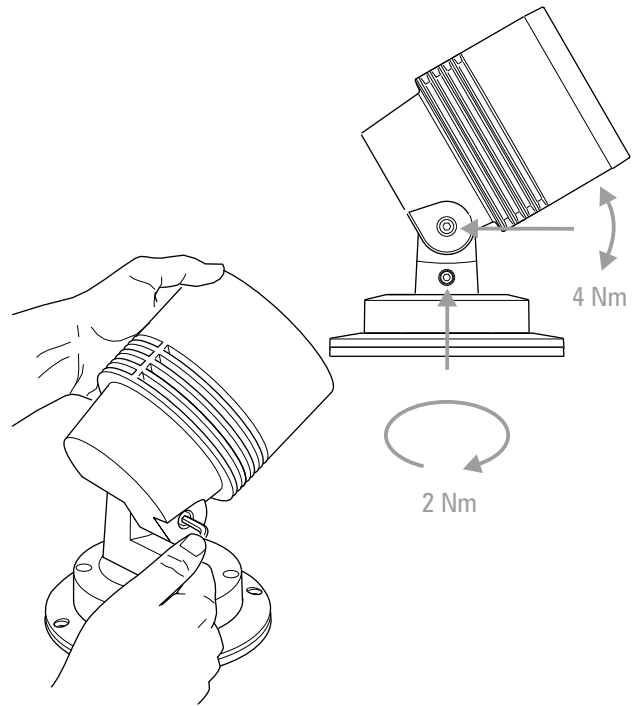
LS6097 remote constant current LED driver (or Lumascap approved equivalent)

cable strip length

- 3. Mount luminaire on base:**
Screw top of luminaire to base ensuring the gasket seal is firmly in place between the two components.

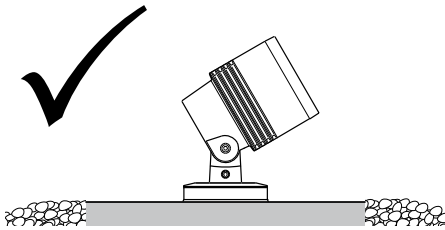


- 4. Aim luminaire:**
Loosen the adjustment screws to change the aim of the luminaire. Once you have the desired tilt and rotation re-tighten the adjustment screws to lock the luminaire in place.

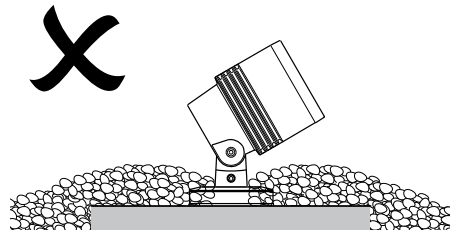


**Do not allow soil, fill or any material to build up around the luminaire.
Warranty will be void.**

Correct installation



Incorrect installation. Void warranty



Questions?
Call +61 7 3286 2299
Email sales@lumascope.com.au
www.lumascope.com.au

SAFETY INSTRUCTIONS

WARNING - To reduce the risk of FIRE or INJURY:

1. Luminaires and transformers to be installed by licensed electrical contractors.
2. Luminaires to be used for intended purpose only.
3. Do not operate the luminaires with a missing or damaged parts.
4. Use only genuine Lumascope parts to replace damaged or missing components.
5. Refer to instructions for installation and operating requirements.
6. Ensure installation complies with local regulations

Voltage insulation test (megger) will permanently damage product and will void warranty.

SAVE THESE INSTRUCTIONS.