

LS471LED: Centria Up / Down IP66 / IP 67

Warranty voided if not installed as per installation instructions

DANGER

ISOLATE LUMINAIRE FROM POWER

Failure to isolate power supply before installation or maintenance may result in fire, serious injury, electric shock, death and may damage the luminaire.



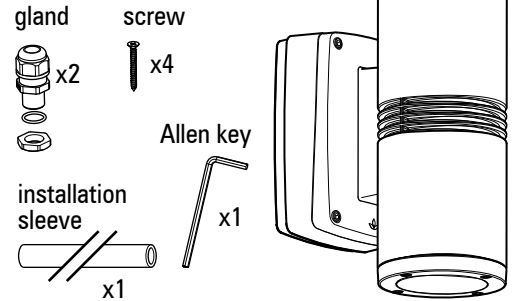
WARNING

Luminaire can become very hot. Use discretion in placement.

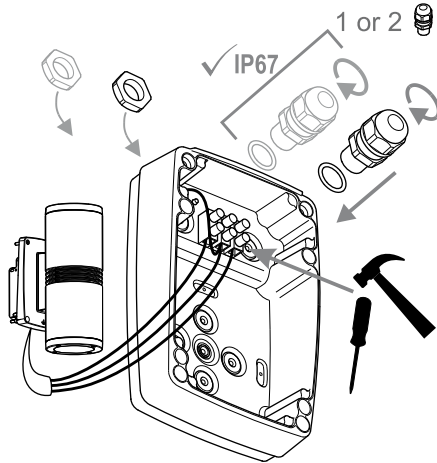
Ensure that installation complies with local authority standards.

All connections must be kept dry; failure to do so may result in product reliability issues.

COMPONENTS

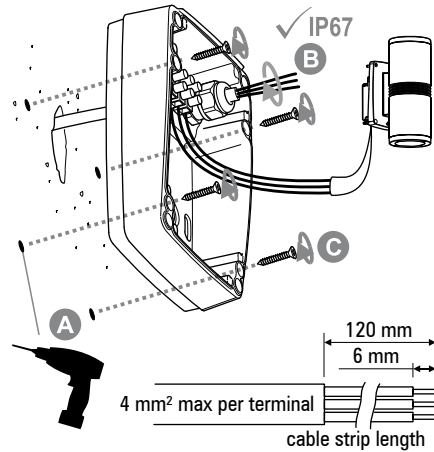


1. Twist glands onto base.



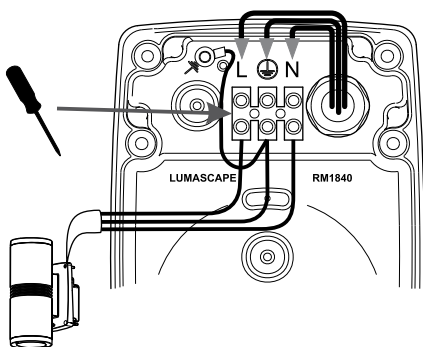
NOTE: Use only 1 x circular cable to keep IP rating

2. Insert cabling into gland.
Screw base onto surface, eg. wall.

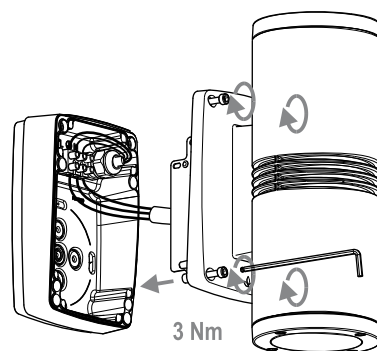


Power supply must be isolated prior to connection or disconnection of cables. Failure to do so will result in damage to the luminaire components.

3. Connect cabling to supply.



4. Screw onto base, DO NOT use power tools. Ensure correct torque is applied.



Questions?
Call +61 7 3286 2299
Email sales@lumascape.com.au
www.lumascape.com.au

SAFETY INSTRUCTIONS

WARNING - To reduce the risk of FIRE or INJURY:

1. Luminaires and transformers to be installed by licensed electrical contractors.
2. Luminaires to be used for intended purpose only.
3. Do not operate the luminaires with a missing or damaged parts.
4. Use only genuine Lumascope parts to replace damaged or missing components.
5. Refer to instructions for installation and operating requirements.
6. Ensure installation complies with local regulations

Voltage insulation test (megger) will permanently damage product and will void warranty.

SAVE THESE INSTRUCTIONS.